

2026

IMAGINE *the*  
POSSIBILITIES

GALA

DIGITAL PROGRAM BOOK

# WELCOME FROM THE PRESIDENT & CEO

Dear Friends,

**We appreciate you being here with us tonight and we are grateful for your ongoing support of Bridgewell.**

Thank you to **Bridgewell's Board of Directors** and our **staff** for their commitment and tireless efforts each day, our valued sponsors and donors who help make this night possible, and the **Gala Planning Committee volunteers and staff** who have worked so hard to make tonight a special celebration.



Tonight, you'll hear stories that reflect the heart of Bridgewell. Our team members don't just provide care – they empower people to set goals, build their skills and confidence, and achieve more than they may have thought was possible. **To everyone in this room:** your presence here tonight reflects your commitment to helping Bridgewell deliver on its vital mission. Because of your support, the people we serve can achieve incredible things.

Each year, Bridgewell supports **more than 7,200 people** across eastern Massachusetts. Individuals experiencing challenges from autism, to an intellectual disability, to housing instability, or substance use disorder. For some, we are lifelong partners. For others, we are there at critical moments – offering a continuum of care that continues to grow and evolve to meet their needs.

And as we look ahead, that commitment to growth is more important than ever. This July, we will take an exciting step forward – joining forces with BAMSI – expanding our reach, strengthening our services, and opening doors to new opportunities.

Thank you for your partnership and support. **Thank you for being part of our legacy, and for joining us as we embrace new horizons together.**

Christopher Tuttle  
President & CEO

# Evening Program

Cocktail Reception, Raffle & Online Auction

*Welcome:* Emcee Katie Thompson, WCVB

*Introduction:* President & CEO Christopher Tuttle

*Excellence in Service Award Presentation*

**8:15 pm – Online Auction Closing!**

*Visionary Leadership Award Presentation*

2026 Gala Video:

*Celebrating Our Legacy, Embracing New Horizons.*

Fund a Need Auction: Katie Thompson & Chris Tuttle

2026 Chart Your Course Raffle Drawing: Katie Thompson

*Closing Remarks:* Board Chair Peter Sheckman, MD

Fund a Need and Online Auction Check Out



**Lancelot**  
JANITORIAL & PAPER PRODUCTS

**We are honored to support  
Bridgewell and their  
commitment to helping  
individuals in need. We wish  
you the best in your  
continued efforts to  
strengthen our community.**

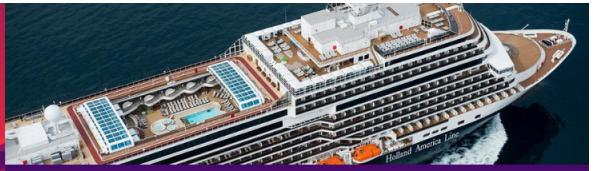
**451 Lynnway  
Lynn, MA 01905  
(781) 592-3170  
[www.lancelotjanitorial.com](http://www.lancelotjanitorial.com)**

# About Bridgewell

Bridgewell delivers support through community housing, day programs, outpatient behavioral health treatment, recovery services, education and employment training and transportation services.

We're committed to helping people in need, from those with autism to people with substance use disorders, become engaged members of their communities. Bridgewell is also the industry leader in developing innovative offerings in response to unmet or emerging needs.





## 2026 CHART YOUR COURSE RAFFLE

### SUPPORT BRIDGEWELL BY PURCHASING A RAFFLE TICKET FOR THE CHART YOUR COURSE RAFFLE!

Win a luxurious five-star cruise for two of up to 7 days through Holland American Cruiselines, in an ocean view stateroom, to Alaska, the Caribbean, Mexico or New England/Canada, including extraordinary dining, spacious staterooms, elegant surroundings and days filled with new discoveries and pampering by an award-winning crew.

Purchase a raffle ticket for \$100 for your chance to win. Only 100 tickets will be sold, increasing your odds – and your donation will help support connecting people with possibilities at Bridgewell! Buy your tickets today!

### BUY YOUR TICKET BEFORE DINNER! FIND A RAFFLE VOLUNTEER OR VISIT THE REGISTRATION TABLE.

# BOARD OF DIRECTORS

Christopher Tuttle, President & CEO

Dr. Peter Sheckman, Chair

Jane Puffer, Vice Chair

Hannah Amoah

John Drake

Karl-Henry Francois

Robert Hallett

Maureen O'Connell

Dr. Leslie Smoot

Robin Sutherland

Christopher Vacarro

# GALA PLANNING COMMITTEE

Jasmine Clayton

Deb Eskenazi

Brad Gosselin

Randi Holland

Joanna Huntington

Nikki Kachinski

Erik Langhoff

Patricia Marrin

Ryan Newhall

Maureen O'Connell

Christine Pierce

Jane Puffer

Christopher Tuttle

Tracey Tuttle

Cathy Woodbury

## BRIDGEWELL MISSION

Bridgewell inspires hope and empowers people experiencing life challenges to achieve their fullest potential.

## BRIDGEWELL VISION

To be unwavering in the pursuit of dignity and opportunity for all who face life challenges.

# EMCEE KATIE THOMPSON

Katie Thompson is the Traffic Anchor and Transportation Specialist for WCVB NewsCenter 5's top-rated EyeOpener weekday newscasts, covering the region's critical transportation and commuter news including breaking stories on travel and infrastructure.

Katie is a New England native who was born and raised in Kennebunk, Maine. She began her career in Boston more than a decade ago as a production assistant and is proud to work in a city she calls her second home.

Katie is a graduate of Hofstra University where she studied broadcast journalism. In her spare time, Katie loves to spend time with her family in Maine and her extended family in Massachusetts.



# THANK YOU TO OUR SPONSORS

## Advocate Sponsors



## Wellness Sponsors



# THANK YOU TO OUR SPONSORS

## **Partnership Sponsors**

Bernie and Phyl's  
Fire Pump Testing Company, Inc.  
Morgan, Brown and Joy  
Pelmeds  
SteadyCare  
Stefano's Landscaping  
Swampscott Refrigeration  
USI

## **Supporter Sponsors**

Bridgeton Properties  
CBIZ  
Eastern Bank Charitable Foundation  
Institution for Savings  
TechMD  
Spinelli's Function Facility; Pasta & Pastry Shop

## **Friend Sponsors**

All Staff  
Ball Consulting Group LLC  
Cassella Waste Management  
Columbia Insurance  
Curtis Strategy  
Driscoll & Driscoll, P.C.  
eHana  
Enterprise Mobility  
Flowers by Lorraine  
GraVoc  
iSolved  
Print House  
RMON  
Salem Five Bank  
Tri-City Sales  
TruNorth Bank

# EXCELLENCE IN SERVICE AWARD

Joseph and Melaney Fodera and Cornerstone Construction will be recognized this evening for their outstanding support of Bridgewell, making a positive difference in their community, and inspiring others to do the same.



The Lynnfield-based construction company has partnered with Bridgewell over the past 16 years to build and renovate many key Bridgewell properties, including its newly opened medical group residence in Groveland, pictured below. The Foderas have also provided philanthropic support to Bridgewell over the years, in addition to their support of many other local organizations.

The *Excellence in Service Award* recognizes individuals or organizations for their outstanding support of Bridgewell, a community or a social cause. The award is intended to honor those making a positive difference in their communities and inspiring others to do the same.



# VISIONARY LEADERSHIP AWARD

Beginning as a Direct Support Professional and advancing to Chief Operating Officer, Elaine will be retiring after 45 years of service. Her leadership has helped shape Bridgewell's remarkable growth and lasting impact. Tonight, she will receive the *Visionary Leadership Award* in appreciation and gratitude of her work. The *Visionary Leadership Award* recognizes excellence to a community, social cause, or to Bridgewell.



Elaine will retire in July, bringing her tenure at Bridgewell to a close. As COO, she leads the day-to-day operations of the organization's entire services portfolio. White has also served on various boards of directors, including Housing Opportunities for Persons with AIDS program, the North Shore HOME Consortium, and President of the Lynn Continuum of Care and Massachusetts Bay Self Insurance Group boards.





## Honored to Support Bridgewell

Cornerstone Construction is honored to be a longstanding supporter of Bridgewell's mission, a trusted partner in their work, and committed to making a meaningful impact.

We are proud to support Bridgewell and the extraordinary impact they make across the North Shore—uplifting lives, strengthening families, and building a more compassionate community.

It is our privilege to give back to a mission that truly matters.

## Trusted Since 1991 Creating Dream Spaces

North Shore, MA & Southern Maine

[www.cornerstoneconst.com](http://www.cornerstoneconst.com)



We Are Fierce Advocates of Health,  
Success and Financial Security

OneDigital Supports  
THE BRIDGEWELL GALA

[www.onedigital.com](http://www.onedigital.com)



Family owned and operated  
**SWAMPSCOTT**  
Refrigeration

**HEATING & AIR CONDITIONING**

HEATING AND COOLING OPTIONS FOR EVERY HOME  
INSTALLATION, SERVICE AND REPAIR

- ✔ HEAT PUMPS
- ✔ AIR CONDITIONING
- ✔ GAS FURNACES
- ✔ ROUTINE MAINTENANCE
- ✔ COMFORT SOLUTIONS
- ✔ HYBRID HOME OPTIONS



**Before Everything, There's Bosch.**  
Simple. Reliable. Innovative.

**SAVE MONEY. SAVE ENERGY.**

UP TO \$2,000 IN TAX CREDITS FOR  
QUALIFYING HEAT PUMP INSTALLATIONS  
CONSULT YOUR TAX PROFESSIONAL FOR DETAILS

**CONTACT US**



[swampscottrefrigeration.com](http://swampscottrefrigeration.com)



781-592-1519

Family owned and operated  
**SWAMPSCOTT**  
Refrigeration

**HEATING & AIR CONDITIONING**

# 2026 FUND A NEED

## **Technology + Education: *Innovation for the Future*** **\$2,500**

Technology devices are important aids for many people with autism and other disabilities in our day and residential programs. We have a need for adaptive equipment, sensory tools, laptops and tablet computers, software and curriculum materials to help build communication and life skills to help those we serve make connections and live more independent lives.

## **Health + Wellness: *Stronger Today, Healthier Tomorrow*** **\$1,000**

Taking care of the body, mind and spirit is a priority in our Bridgewell programs. This can take many forms, such as art, animal or music therapy; exercise equipment for our day programs, fitness classes and gym memberships, sports leagues and other recreational activities and games; and therapy tools such as sketch books, journals, yoga and meditation classes.

## **A Sense of Home: *Home for Today and Tomorrow*** **\$500**

Many people in our care have very limited resources, so basic items such as toiletries, linens, towels, diapers, formula, clothing and groceries are often considered luxuries. Necessities like transportation to therapy or a job can be out of reach. Donating to the A Sense of Home package provides items that people in our therapy, recovery and affordable housing programs need to help them get started on a new path in life.

# 2026 FUND A NEED

## **Enriching Experiences: *Creating Lifelong Memories***

**\$250**

People in our services have dreams and aspirations, and goals they are striving to reach. Enrichment at Bridgewell could be tickets to a show or a game, an aquarium or museum membership; a party with friends and family to celebrate a milestone; pottery, music or art sessions. This category will also help fund our annual Bridgewell Formal – a dinner and dancing event that we started last year for people in our services.

## **Care & Comfort: *Dignity in Every Moment***

**\$100**

Show your commitment to caring by giving a gift of \$100 to support Bridgewell's vital programming, connecting more people with possibilities! Help our team continue to inspire and empower the people in our services.

Terms: Hold your bid paddle high and steady during the Fund a Need Auction. All bid paddle raises are considered pledges and committing to donate to Bridgewell's Fund a Need Auction. Donors may bid on multiple levels.

Bid Paddle Drop: The final round of the Fund a Need Auction includes "dropping in your bid paddle" for a chance to win a gift card. By dropping in your bid paddle, you are making a pledge to donate \$100 in addition to any previous paddle raises.

Please visit registration to check out or with any questions.



*"Outstanding Value...Practical Solutions"*

***Phone: (978) 846-5622***

***Congratulations to Bridgewell for over 60 years of providing essential high-quality services and connecting people with possibilities!***

***AA Maintenance Solutions, Inc. is proud to partner with you in improving the lives of the individuals and families you serve.***



FUNERAL, MEMORIAL & CREMATION SERVICES

Family Owned and Operated

*Caring for Our Community in Countless Ways*

Office: 426 Broadway (Rt. 129) • Lynn, MA 01904

67 Ocean Street (Rt. 1A) • Lynn, MA 01902

781-595-1492 • [www.solimine.com](http://www.solimine.com)



# DAVCO

## SYSTEMS

LIFE SAFETY & ASSET PROTECTION

4 Webb Place Saugus, MA 01906 (800) 227-1726 [www.davcosystems.com](http://www.davcosystems.com)

*TRUSTED SINCE 1979*  
*FOR*  
*ACCESS, CCTV, FIRE, SECURITY AND*  
*SPRINKLER SOLUTIONS*

## Helping to build strong community relationships.

The Rockland Trust Charitable Foundation is pleased to support **Bridgewell** for their *Imagine the Possibilities Gala*.

We know that by supporting our neighbors, we're strengthening the same communities in which we live and work, and building relationships that last a lifetime.

To learn more about Rockland Trust,  
visit any branch or [RocklandTrust.com](http://RocklandTrust.com)

**ROCKLAND**  
**TRUST**

Charitable Foundation

Member FDIC

# Bernie & Phyl's

FURNITURE  
Family Owned & Operated

*Bernie & Phyl's is a proud supporter of Bridgewell.*

*Thanks to Bridgewell for your hard work and dedication!*



Braintree, Hyannis, Raynham,  
Natick, Saugus & Westboro, MA,  
S. Portland, ME,  
Nashua & Newington, NH



*Proud to support Bridgewell  
and keep those in their care  
safe for over 15 years!*

Evaluation, Testing and Certification of Fire Suppression Systems  
Fire Pump Testing, Standpipe Testing and Building Commissioning  
Hydrant Flow Testing and Water Supply Analysis  
Residential and Commercial System Installation and Service  
Fire Protection Design and Engineering - System Hydraulic Analysis

11 Varney Street, Boston, Massachusetts  
[www.thefirepumptestingcompany.com](http://www.thefirepumptestingcompany.com)

Thomas Duross  
Tel: (617) 971-0700  
Fax: (617) 524-7171  
Cell: (617) 592-4236

Member: ASPE, NFPA, AFSA, NFSA, BBB

*Congratulations Bridgewell!!*

**MB&J** | MORGAN  
BROWN & JOY

**Morgan, Brown & Joy, LLP**  
is proud  
to support Bridgewell.



*Trusted Legal Counsel for Employers*

28 State Street, 16th Floor,  
Boston, MA 02109  
(617) 523-6666

[morganbrown.com](http://morganbrown.com)

STEADYCARE

# THANK YOU, BRIDGEWELL.

Thank you for your tireless dedication to empowering individuals. SteadyCare is proud to provide the overnight presence and verification check-in system that helps you ensure safety and peace of mind in every home.

[www.steadycare.com](http://www.steadycare.com)



Ready for a  
**spring cleanup?**



A Full-Service Landscaping  
and Construction Company

[stefanoslandscaping.com](http://stefanoslandscaping.com) • 978.352.8834

**PelmEds**<sup>TM</sup>

Pelmeds is proud to be  
Bridgewell's pharmacy partner



**This is who we are.  
This is what we do.**

[www.pelmeds.com](http://www.pelmeds.com)

USI is a proud sponsor of the  
Imagine the Possibilities Gala

Count on USI to protect your  
business and employees

Property & Casualty Insurance  
and Employee Benefit Solutions



Mike Perkins  
SVP of Human & Social Services  
508.783.5532

[Mike.Perkins@USI.com](mailto:Mike.Perkins@USI.com)

# PROGRAMS AND SERVICES

## Autism and Disability Services: Community Housing, Day Programs and Employment

Supporting people with intellectual, developmental and physical disabilities through community housing, day programs, employment services and other offerings aimed at empowering them to live safe, self-directed and productive lives.



## Behavioral Health Services

Comprehensive treatment for children and adults challenged with psychiatric and sometimes developmental disabilities. Services include outpatient treatment, medication management, counseling, education, evaluation, along with other support.



## Professional Development

Through Bridgewell's Center for Professional Development, we offer continuing education for mental health and healthcare professionals and educators through workshops and conferences on a variety of clinical and management topics.



# PROGRAMS AND SERVICES

## Homelessness and Housing Services

Housing programs include counseling focused on supporting people who are homeless and starting a new path in life. Bridgewell provides safe, affordable housing options for very-low income people and families.

## Recovery Services

Each person with a substance use disorder requires a different mix of services: counseling, community and recovery housing, and job placement. We work in coordination with area hospitals, the criminal justice system, and community agencies to identify people in need and put them on the path to recovery.





*Flowers by  
Lorraine*

**Robin Keighley, Owner**

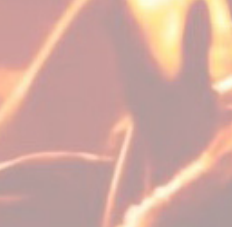
**541 Boston Street, Lynn, MA 01905**

**781-599-3319**

**Fblflorist@gmail.com**

**flowersbylorraineandrobin.com**

THANK YOU TO THE LYNN AUDITORIUM  
 FOR THEIR GENEROSITY! CHECK OUT  
 THEIR UPCOMING SHOWS:  
[WWW.LYNNAUDITORIUM.COM](http://WWW.LYNNAUDITORIUM.COM)



# SPECIAL THANK YOU

## ***Our Generous:***

Auction Donors  
Bridgewell Board of Directors  
Bridgewell Staff  
Gala Donors  
Gala Planning Committee  
Gala Volunteers  
David Fox Photography  
Flowers by Lorraine

## ***Video Production:***

GraVoc: Jade Brewer & Michael Sirois

## ***Video Stars:***

Greg & Magalie Moise  
Donna Lucier  
Heather & Susan Gagnon

Katie Thompson and WCVB  
Renaissance Boston Seaport District

## ***Corinthian Events:***

Hannah Goddard, Jennifer Logan and Isabel Allaire



THANK YOU